

BIOTRACE ELEMENTAL MAGNESIUM



\$31.40 inc GST

PRODUCT SUMMARY

BioTrace Elemental Magnesium is a concentrated liquid supplement that provides 105 mg of Magnesium per serve, in ionic form. This is the form most recognised by the body.

MORE INFORMATION

Elemental Magnesium also contains concentrated mineral drops (CMD), naturally sourced from The Dead Sea in Jordan, providing up to 72 trace elements that may be missing from the diet.

Observations of reduced dietary magnesium intake in modern Western countries compared to earlier generations may be related to food refining and modern fertilisers that contain no magnesium.

Magnesium is an essential cofactor for more than 300 chemical reactions within the body. It may support the body with normal energy levels, sleep and mood balance, adrenal gland health, immunity, brain function, muscle function and other bodily functions adversely associated with stress.

Magnesium supports the absorption and assimilation of other minerals including calcium, phosphorous, sodium and potassium and vitamins such as B Complex Vitamins, Vitamin C and Vitamin E.

Our BioTrace Liquid Elemental range provides affordable, flexible dosage options of many essential minerals.

- Bio-available, liquid Magnesium concentrate with up to 72 naturally occurring trace elements
 - May support the body during times of stress, poor sleep and mood imbalance
- May support the absorption of many essential vitamins and minerals including calcium, potassium and B vitamins
 - Economical and flexible dosage form

SKU: 001-021 | **Categories:** [Brand](#), [BioTrace](#), [Elementals](#), [Retail Products](#) | **Tags:** [Blood Sugar](#), [Cardiovascular](#), [Detoxification](#), [Energy](#), [Minerals](#), [Mood & Sleep](#), [Sport](#), [Stress](#)

PRODUCT DESCRIPTION

Serving Size 1 ml

| | |
|-----------|--------|
| Magnesium | 105 mg |
| Chloride | 340 mg |
| Sodium | 3.5 mg |
| Potassium | 2.3 mg |

Other Ingredients: Dead Sea Minerals (DSM), Purified Water. Vegetarian formula.

ADDITIONAL INFORMATION

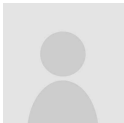
| | |
|-------------------------|---|
| Weight | 97 g |
| Dimensions | 35 × 35 × 120 mm |
| Indications | Blood Sugar, Cardiovascular, Detoxification, Energy, Minerals, Sport, Stress, Mood & Sleep |
| Size | 60 mL |
| Product Features | Artificial Colour Free, BPA Free, cGMP Manufactured, Child Friendly, Corn / Maize Free, Dairy Free, Egg Free, GMO Free, Heavy Metals Tested, Low Sodium, Magnesium Stearate Free, No Added Gluten, No Added Nut, Pregnancy Breastfeeding Safe, Soy Free, Sugar Free, Synthetic Preservative Free, Toxic Excipient Free, Vegan, Vegetarian |

Adults: Using the Opti-Dose measured dropper, take 1ml twice daily in water or juice, or as directed by your health professional

- Always read the label and use as directed
- If you are pregnant, nursing, or taking any medications, consult your health practitioner before use
- If any adverse reactions occur, immediately stop using this product and consult your health practitioner
- If seal cap is damaged or missing do not use

Nutritional supplements should be stored in a cool, dry place, with caps tightly closed, and out of reach from children. Take only as directed.

1 REVIEW FOR BIOTRACE ELEMENTAL MAGNESIUM

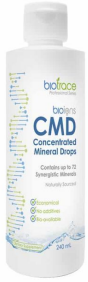


Pamela Oliver - 2023-10-12 13:15:05

5 out of 5

I have found that the BioTrace Elemental Magnesium liquid very effective in reducing cramps and steadying my heart so it does not miss beats and have been using it for many years. It works whereas I find tablet form not real effective for my problems

YOU MAY ALSO LIKE...



**BioTrace CMD
Concentrated
Mineral Drops**



**BioTrace Elemental
Multi Trace (No
Added Copper)**



**PRL Magnesium
Powder**



**BioTrace
Magnesium Citrate**